



UNIVERSITY of NORTH TEXAS HEALTH SCIENCE CENTER

Technology Transfer & Commercialization

Compound to Discriminate Serotonin Receptor Subtype

Learn more!

Robert McClain, PhD
Associate Vice President
rmcclain@hsc.unt.edu
817-735-2618

Research Tool

2009-100

Our Inventors

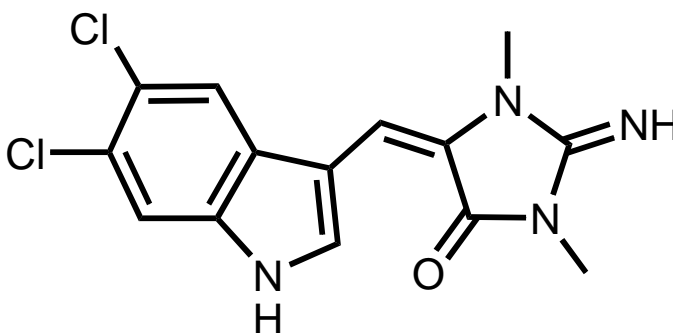
Dr. John A. Schetz
jschetz@hsc.unt.edu

Application

- Compound UNT-TWU-22 is highly selective for the human serotonin 5-HT_{2C} receptor subtype
- Useful for basic and applied pharmacological research studies of psychiatric, neurological, and other disorders including:
 - Depression
 - Anxiety
 - Obsessive-compulsive disorder
 - Schizophrenia
 - Obesity
 - Erectile Dysfunction
 - Tardive Dyskinesia

Details

- Compound has a nanomolar affinity value ($K_i = 46$ nM) and is approximately 2000-fold selective for human serotonin 5HT_{2C} receptor subtype over the 5-HT_{2A} and 5-HT_{1A} subtypes.
- Synthetic aplysinopsin derivative:



3500 Camp Bowie Blvd
Fort Worth, TX 76107
Phone: 817-735-5147
FAX: 817-735-5485
techtransfer@hsc.unt.edu

8/25/09